

# C02 CARBON CAPTURE

---

Utilisation & Storage  
A Safe Solution, Covering the Entire  
CCUS Transport Chain



**ELAFLEX**  
Group

# CARBON CAPTURE, UTILISATION & STORAGE – CCUS

CO<sub>2</sub> emissions can be permanently reduced by capturing and storing or utilising carbon dioxide (CCUS – Carbon Capture, Utilisation & Storage). This can be achieved through cryogenic separation. The main challenge is not the medium itself, but the combination of low temperatures and low pressures, which poses the greatest difficulty for safe, spill-free transfer from CO<sub>2</sub> capture to utilisation and storage.

As a globally leading specialist for the transfer of gases and fluids the ELAFLEX Group has aligned the core competencies of its member companies to address this challenge and developed reliable solutions for the entire CCUS transport chain.

## DRY CRYOGENIC COUPLINGS – DCC

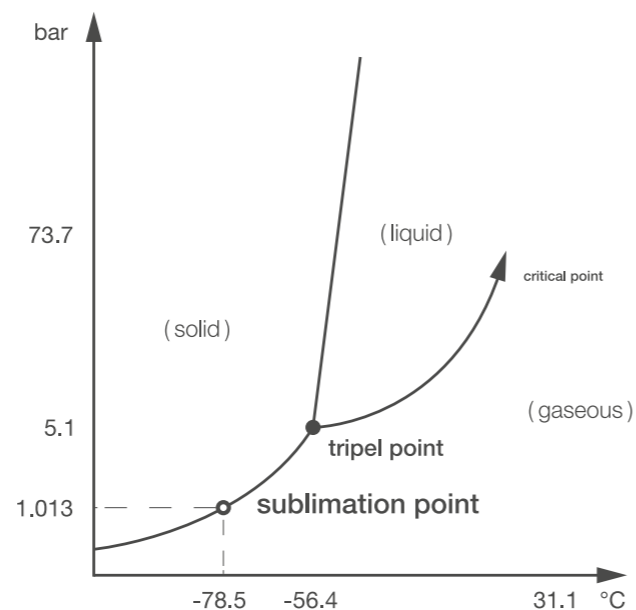
MannTek Dry Cryogenic Couplings are designed for use in cryogenic applications and media such as liquefied CO<sub>2</sub> (LCO<sub>2</sub>), LNG, nitrogen, oxygen, argon, ethylene, and other liquefied gases. They enable quick and safe connection of hoses and loading arms under pressure with minimised product loss (e.g. truck and ship bunkering). During the cool-down phase, no retightening of the connection is required, unlike flanged or threaded connections. Available in sizes up to 8" with various connection options. Temperature range: -196 °C to +85 °C, operating pressure: 25 bar (2.5 MPa). MannTek DCCs comply with ISO 21593 or ISO/TS 18683.



Online configurator:  
[manntekconfigurator.elaflex.de](http://manntekconfigurator.elaflex.de)

## CO<sub>2</sub> PHASE DIAGRAM

Compared to other gases and other liquefied gases, the physical properties of CO<sub>2</sub> and LCO<sub>2</sub> cause a significant temperature decrease during rapid pressure drops. During loading and transport, the temperature should remain above -56.4 °C and 8–9 bar to keep CO<sub>2</sub> in the liquid phase. Otherwise, solid CO<sub>2</sub>, also known as 'dry ice' can form. This highlights the importance of well-designed valves to minimise pressure drop. MannTek Dry Cryogenic Couplings are the preferred choice, combining safe, quick handling with reduced internal pressure drop for time-efficient and operator-friendly LCO<sub>2</sub> transfer.



# CRYOGENIC BREAKAWAY COUPLINGS – CBC

Cryogenic Breakaway Couplings prevent spillage and damage caused by accidental drive-away or pull-away incidents during loading and unloading between mobile and stationary units. The breaking force of the MannTek CBC is defined by the weakest component of the hose line or loading arm, ensuring controlled disconnection of the supply line. The couplings are reusable and suitable for cryogenic liquefied gases such as liquefied CO<sub>2</sub> (LCO<sub>2</sub>), LNG, nitrogen, oxygen, argon, and ethylene down to -196 °C. Available in breaking pin (marine and industrial) and cable release version. MannTek CBCs are available in sizes up to 8" with various connection options. Temperature range: -196 °C to +85 °C, operating pressure: 25 bar (2.5 MPa).



Online configurator:  
[manntekconfigurator.elaflex.de](http://manntekconfigurator.elaflex.de)



## COMPOSITE HOSES FOR CRYOGENIC CO<sub>2</sub> DANCHEM PA SS

Dantec liquefied CO<sub>2</sub> (LCO<sub>2</sub>) composite hoses Type Danchem PA SS Cryogenic CO<sub>2</sub> are multi-layer thermoplastic hoses with internal and external helix, are a versatile solution, but not exclusively the choice for ship-to-ship, ship-to-shore, truck-to-ship, and terminal operations. According to EN 13766:2018 for suction and delivery operations. Deliverable size range DN from DN 25 (1") to DN 250 (10"), PN 25 bar, PB > 125 bar, with a temperature range from -104 °C to -80 °C. Delivered assembled and tested with a variety of flange or threaded fittings to customer requirements.

Online configurator:  
[configurator.dantec.com](http://configurator.dantec.com)



# THE ELAFLEX GROUP

// Air Traffic Trade

**Aljac**

**DANTEC**

ditec

**Oasis**

**ELAFLEX**

**MannTek**

**SGB**

**REIFLEXA**



Contact data of our approximately  
150 distribution partners worldwide:

[elaflex.com/contact/distribution-partners](http://elaflex.com/contact/distribution-partners)

## ELAFLEX GROUP MEMBERS WORLDWIDE

<b>Air Traffic Trade AB</b> <b>Sweden</b>	Måttbandsvägen 12 18766 Täby Tel. +46 8-768 39 90 info@airtt.se airtt.se	<b>ELAFLEX FRANCE</b> <b>SARL</b> <b>France</b>	Aktipark 50 Rue des Chardonnerets, Lot N° 3 93290 Tremblay en France Tel. +33 1 41 84 06 22 info@elaflex.fr elaflex.fr	<b>ELAFLEX</b> Yakıt İletim Ürünleri Ltd. Şti. <b>Turkey</b>	42 Maslak Plaza Ahi Evran Street No:6 34485 Maslak - Sarıyer İstanbul, Turkey Tel. +90 212 974 1020 batuhan.kiroglu@elaflex.com elaflex.com.tr
<b>Aljac GmbH</b> <b>Germany</b>	c/o ELAFLEX HIBY GmbH & Co. KG Schnackenburgallee 121 22525 Hamburg Tel. +49 40 6908 4116 info@aljac.de aljac.de	<b>ELAFLEX ITALIA SRL</b> <b>Italy</b>	Via Industriale 28 25086 Rezzato (BS) Tel. +39 030 249 61 00 info@elaflex.it elaflex.it	<b>Mann Teknik AB</b> <b>Sweden</b>	Strandvägen 16 54231 Mariestad Tel. +46 501 39 32 00 sales@manntek.se manntek.se
<b>Aljac Fuelling</b> <b>Components Ltd.</b> <b>Great Britain</b>	Unit 1a, Watchmore Point Camberly, Surrey GU15 3AD Tel. +44 1932 269869 sales@aljac.com aljac.com	<b>ELAFLEX</b> Latin America S.A. <b>Argentina</b>	Av. Dardo Rocha 2524 Piso 1° Martinez (1640) Buenos Aires, Argentina Tel. +54 11 4836-3510 ventas.latinamerica@elaflex.com.ar elaflex.com.ar	<b>Mann Teknik China</b> <b>China</b>	Building C, No 505, 23rd Street, Qian Tang District, Hangzhou Tel. +86 571-87695112 info@manntek.cn manntek.cn
<b>DANTEC LTD</b> <b>Great Britain</b>	Tarran Way, Moreton, Wirral CH46 4TL Tel. +44 151 678 2222 sales@dantec.com dantec.com	<b>ELAFLEX LTD</b> <b>Great Britain</b>	Riverside House Plumpton Road Hoddesdon, Herts EN11 0PA Tel. +44 1992 45 29 50 sales@elaflex.co.uk elaflex.co.uk	<b>MannTek Couplings</b> <b>India Pvt. Ltd.</b> <b>India</b>	Office No. LF7A/7B Lotus Aura, Sama -Savli Road, Vadodara - 390008, Gujarat Tel. +91 9558 825 855
<b>ditec Gruppe</b> <b>Germany</b>	An der Staustufe 6 97318 Kitzingen Tel. +49 9321 2307-0 info@ditec-adam.de ditec-adam.de	<b>ELAFLEX NV</b> <b>Belgium</b>	Merksemsesteenweg 192 2100 Deurne (Antwerp) Tel. +32 3 32 80 420 info@elaflex.be elaflex.be	<b>Oasis Engineering</b> <b>Limited</b> <b>New Zealand</b>	129 Birch Avenue Tauranga, 3110 Tel. +64 7 928 3808 info@oasisngv.com oasisngv.com
<b>ELAFLEX AB</b> <b>Sweden</b>	Måttbandsvägen 12 18766 Täby Tel. +46 8 980 130 info@elaflex.se elaflex.se	<b>ELAFLEX PACIFIC</b> <b>PTY LTD</b> <b>Australia</b>	Unit 29/58 Box Road Taren Point NSW 2229 Tel. +61 2 9525 0945 info@elaflex.com.au elaflex.com.au	<b>SGB GmbH</b> <b>Germany</b>	Hofstraße 10 57076 Siegen Tel. +49 271 48964-0 sgb@sgb.de sgb.de
<b>ELAFLEX HIBY</b> <b>Asia-Pacific Pte. Ltd.</b> <b>Singapore</b>	Mr. Marvin Lambert Office Singapore Tel. +65 8486 4435 marvin.lambert@elaflex.com	<b>ELAFLEX</b> Representation Office <b>China</b>	Mr. Jing Fan Room 1120, 1101 South Pudong Road, 200120 Shanghai, P.R. China Tel. +86 21 505 414 54 fan.jing@elaflex.net.cn elaflex.com	<b>ELAFLEX</b> <b>Group</b>	
<b>ELAFLEX</b> <b>BRAZIL Eireli</b> <b>Brazil</b>	Avenida Brigadeiro Luis Antonio, N° 300 8° andar sala 82 Bela vista, São Paulo-SP Brazil - CEP 01318-903 Tel. +55 11 4153-2171 vendas.brasil@elaflex.com.ar elaflex.com.ar	<b>ELAFLEX US Inc.</b> <b>USA</b>	11310 Slater Ave Fountain Valley, CA 92708 Tel. +1 888 472 7444 info@elaflexus.com elaflexus.com	<b>ELAFLEXHIBY GmbH &amp; Co. KG</b> Schnackenburgallee 121 22525 Hamburg   Germany Tel. +49 40 540005-0 info@elaflex-group.com elaflex-group.com	